

LinMot®

P01-23x80F-HP

Import Belgium & Luxembourg

Profilex s.a.

4A, Z.I. In den Allern Tel: 00352/99 89 06
L-9911 Troisvierges Fax: 00352/26 95 73 73

www.profilex-systems.com

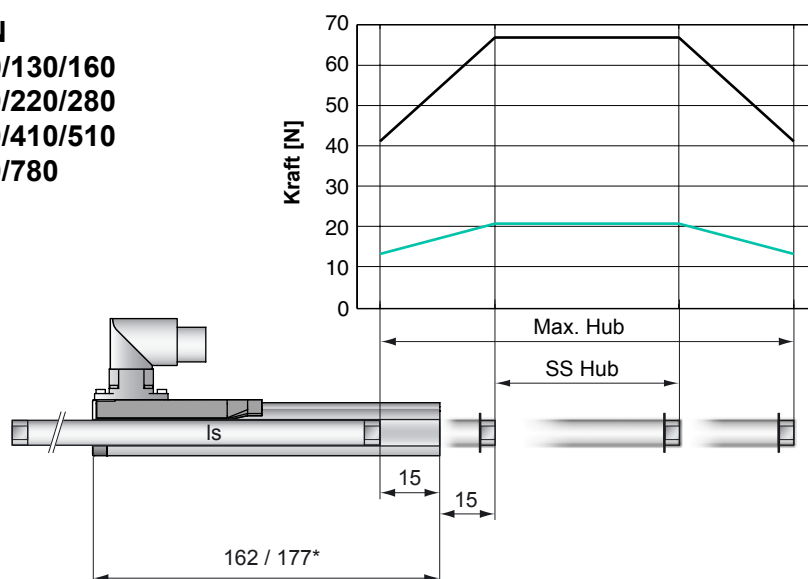
profilex@pt.lu



The linear motor technology for industrial applications



Spitzenkraft: 67N
Maximaler Hub: 100/130/160
 200/220/280
 350/410/510
 690/780



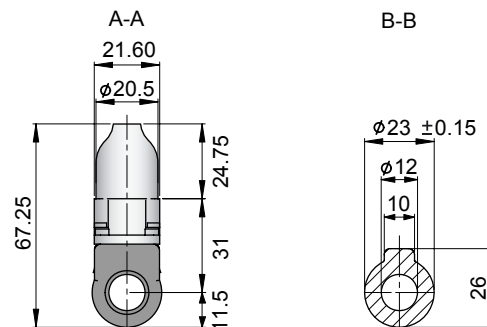
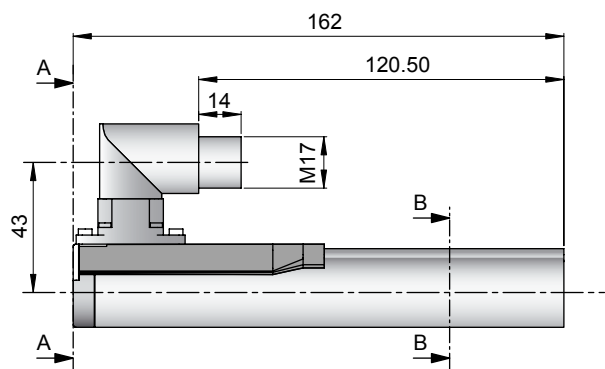
— E1100, 72VDC &
 E1001, 72VDC
 — E100, 48VDC

Abmessungen mm
 *Kabel Typ

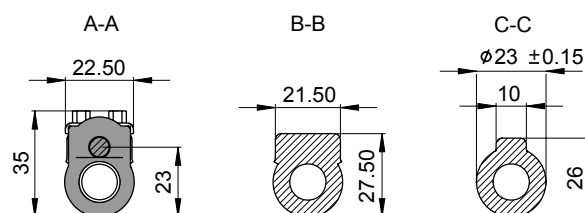
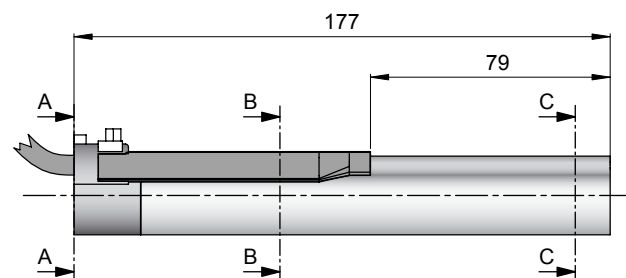
Motor Spezifikation

		Stecker Typ						Kabel Typ					
		23x80F-HP-R						23x80F-HP-R20					
P01-		100	130	160	200	220	280	350	410	510	690	780	
Maximaler Hub	mm (in)	100	130	160	200	220	280	350	410	510	690	780	
Kurzhubbereich SS	mm (in)	40	70	100	140	160	220	290	350	450	630	720	
Spitzenkraft E1100/E1001	N (lbf)	67 (15.1)											
Spitzenkraft E100	N (lbf)	21 (4.7)											
Kont. Kraft	N (lbf)	15 (3.5)											
Kont. Kraft mit Lüfter	N (lbf)	25 (5.6)											
Randkraft	%	63											
Kraftkonstante	N/A (lbf/A)	9 (2.0)											
Max. Strom @ 72VDC	A	7.5											
Max. Strom @ 48VDC	A	7.5											
Max. Gesch. @ 72VDC	m/s (in/s)	7.3 (287)											
Max. Gesch. @ 48VDC	m/s (in/s)	4.9 (193)											
Phasenwider. 25/110 °C	Ohm	4.2/5.5											
Phaseninduktivität	mH	0.6											
Therm. Widerstand	°K/W	5.6											
Therm. Zeitkonstante	sec	1600											
Statordurchmesser	mm (in)	23 (0.91)											
Statorlänge	mm (in)	162/177* (6.38/6.97*)											
Statormasse	g (lb)	265 (0.58)											
Läuferdurchmesser	mm (in)	12 (0.47)											
Läuferlänge	mm (in)	170	200	230	270	290	350	420	480	580	760	850	
Läufermasse	g (lb)	125	150	175	210	230	280	340	390	475	625	700	
Wiederholgenauigkeit	mm (in)	±0.05 (±0.0020)											
Linearität	%	±0.1											
Wiederholgenauigk. ES	mm (in)	±0.01 (±0.0004)											
Linearität ES	mm (in)	±0.01 (±0.0004)											

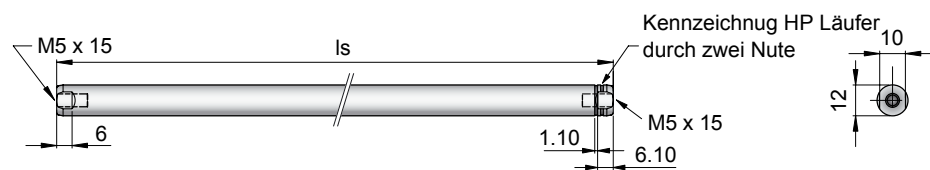
PS01-23x80F-HP-R



PS01-23x80F-HP-R20



PL01-12x.../-HP



ls
170mm □ 200mm □ 230mm
270mm □ 290mm □ 350mm
420mm □ 480mm □ 580mm
760mm □ 850mm

Linearmotor		Stator		Läufer	
Typ	Art. Nr.	Typ	Art. Nr.	Typ	Art. Nr.
P01-23x80F/40x100-HP	-->			& PL01-12x170/130-HP	0150-1529
P01-23x80F/70x130-HP	-->			& PL01-12x200/160-HP	0150-1518
P01-23x80F/100x160-HP	-->			& PL01-12x230/190-HP	0150-1519
P01-23x80F/140x200-HP	-->			& PL01-12x270/230-HP	0150-1520
P01-23x80F/160x220-HP	-->	PS01-23x80F-HP-R	0150-1259	& PL01-12x290/250-HP	0150-1521
P01-23x80F/220x280-HP	-->	PS01-23x80F-HP-R20	0150-1260	& PL01-12x350/310-HP	0150-1522
P01-23x80F/290x350-HP	-->			& PL01-12x420/380-HP	0150-1523
P01-23x80F/350x410-HP	-->			& PL01-12x480/440-HP	0150-1524
P01-23x80F/450x510-HP	-->			& PL01-12x580/540-HP	0150-1525
P01-23x80F/630x690-HP	-->			& PL01-12x760/720-HP	0150-1526
P01-23x80F/720x780-HP	-->			& PL01-12x850/810-HP	0150-1527

Stecker

Motor Steckerbelegung

Kabellänge:
P01-23x80...-HP-R20 0.2m

Ph 1+	rot	1
Ph 1-	pink	2
Ph 2+	blau	3
Ph 2-	grau	4
+5VDC	weiss	A
GND	innerer Schirm	B
Sinus	gelb	C
Cosinus	grün	D
Temp.	schwarz	E
Schirm	äusserer Schirm	Geh.

Zubehör

