

LinMot®

P01-37x120F-HP

Import Belgium & Luxembourg

Profilex s.a.

4A, Z.I. In den Allern Tel: 00352/99 89 06
L-9911 Troisvierges Fax: 00352/26 95 73 73

www.profilex-systems.com

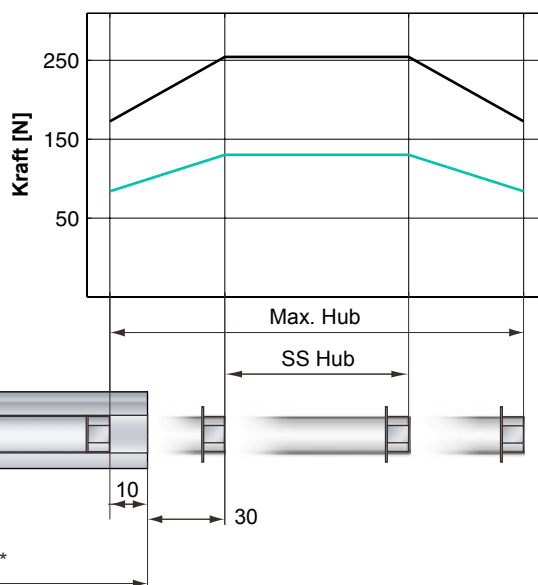
profilex@pt.lu



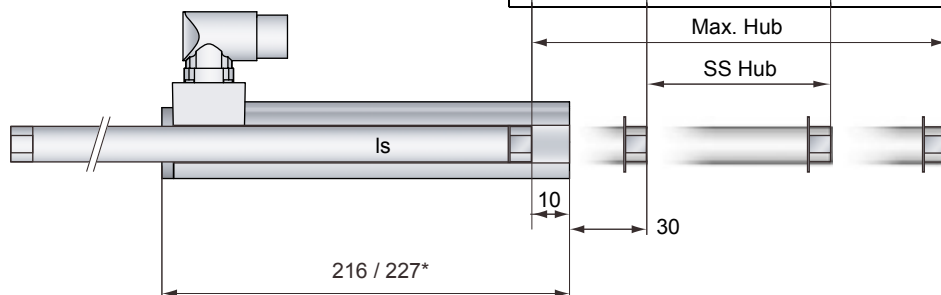
The linear motor technology for industrial applications



Spitzenkraft: 255N
**Maximaler Hub: 120/180/240/280/
 380/480/580/680/
 780/880/1080/
 1280/1480mm**



— E1100-HC, 72VDC
 — E1100, 72VDC & E1001, 72VDC

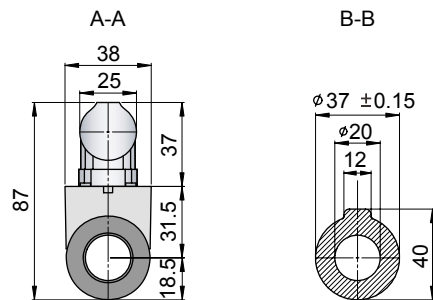
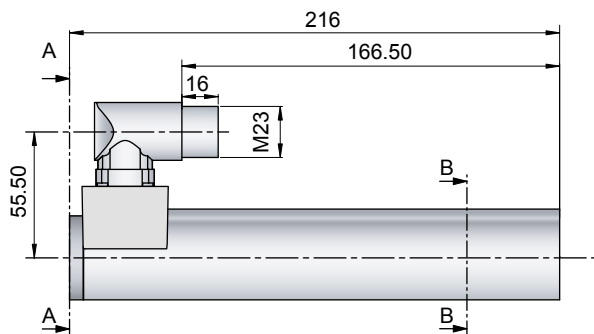


Abmessungen mm
 *Kabel Typ

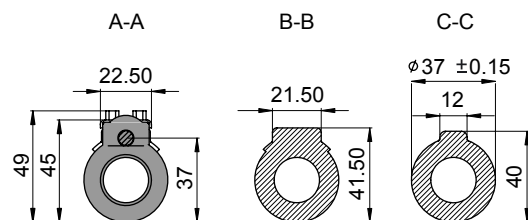
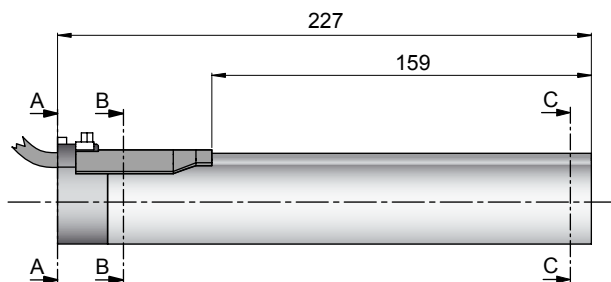
Motor Spezifikation

	P01-	Stecker Typ							Kabel Typ					
		37x120F-HP-C							37x120F-HP-C20					
Maximaler Hub	mm (in)	120	180	240	280	380	480	580	680	780	880	1080	1280	1480
Kurzhubbereich SS	mm (in)	40	100	160	200	300	400	500	600	700	800	1000	1200	1400
Spitzenkraft E1100-HC	N (lbf)	255 (57.3)												
Spitzenkraft E1100 / E1001	N (lbf)	136 (30.6)												
Kont. Kraft	N (lbf)	51 (11.5)												
Kont. Kraft mit Lüfter	N (lbf)	92 (20.7)												
Randkraft	%	67												
Kraftkonstante	N/A (lbf/A)	17 (3.83)												
Max. Strom @ 72VDC	A	15												
Max. Strom @ 48VDC	A	15												
Max. Gesch. @ 72VDC	m/s (in/s)	3.9 (154)												
Max. Gesch. @ 48VDC	m/s (in/s)	2.6 (102)												
Phasenwider. 25/110 °C	Ohm	2.35/3.2												
Phaseninduktivität	mH	1.6												
Therm. Widerstand	°K/W	3.2												
Therm. Zeitkonstante	sec	3100												
Statordurchmesser	mm (in)	37 (1.46)												
Statorlänge	mm (in)	216/227* (8.5/8.94*)												
Statormasse	g (lb)	740 (1.63)												
Läuferdurchmesser	mm (in)	20 (0.79)												
Läuferlänge	mm (in)	240	300	360	400	500	600	700	800	900	1000	1200	1400	1600
Läufermasse	g (lb)	510	650	800	880	1110	1350	1580	1810	2040	2270	2740	3170	3640
Wiederholgenauigkeit	mm (in)	±0.05 (±0.0020)												
Linearität	%	±0.1												
Wiederholgenauigk. ES	mm (in)	±0.01 (±0.0004)												
Linearität ES	mm (in)	±0.01 (±0.0004)												

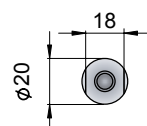
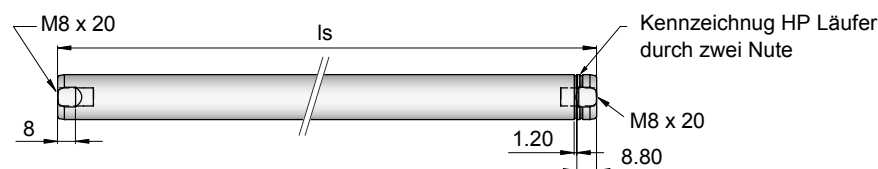
PS01-37x120F-HP-C



PS01-37x120F-HP-C20



PL01-20x.../...-HP



Is 240mm □ 300mm □ 360mm □
400mm □ 500mm □ 600mm □
700mm □ 800mm □ 900mm □
1000mm □ 1200mm □
1400mm □ 1600mm

Linearmotor		Stator		Läufer	
Typ	Art. Nr.	Typ	Art. Nr.	Typ	Art. Nr.
P01-37x120F/40x120-HP	-->			& PL01-20x240/180-HP	0150-1505
P01-37x120F/100x180-HP	-->			& PL01-20x300/240-HP	0150-1506
P01-37x120F/160x240-HP	-->			& PL01-20x360/300-HP	0150-1507
P01-37x120F/200x280-HP	-->			& PL01-20x400/340-HP	0150-1508
P01-37x120F/300x380-HP	-->			& PL01-20x500/440-HP	0150-1509
P01-37x120F/400x480-HP	-->	PS01-37x120F-HP-C	0150-1251	& PL01-20x600/540-HP	0150-1510
P01-37x120F/500x580-HP	-->	PS01-37x120F-HP-C20	0150-1252	& PL01-20x700/640-HP	0150-1511
P01-37x120F/600x680-HP	-->			& PL01-20x800/740-HP	0150-1512
P01-37x120F/700x780-HP	-->			& PL01-20x900/840-HP	0150-1513
P01-37x120F/800x880-HP	-->			& PL01-20x1000/940-HP	0150-1514
P01-37x120F/1000x1080-HP	-->			& PL01-20x1200/1140-HP	0150-1515
P01-37x120F/1200x1280-HP	-->			& PL01-20x1400/1340-HP	0150-1516
P01-37x120F/1400x1480-HP	-->			& PL01-20x1600/1540-HP	0150-1517

Stecker

Motor Steckerbelegung

Kabellänge:
P01-37x120...-HP-C20 0.2m

Ph 1+	rot	A
Ph 1-	pink	B
Ph 2+	blau	C
Ph 2-	grau	D
+5VDC	weiss	E
GND	innerer Schirm	F
Sinus	gelb	G
Cosinus	grün	H
Temp.	schwarz	L
Schirm	äusserer Schirm	Gehäuse

Zubehör

