

LinMot®

Stainless Steel Motors

Import Belgium & Luxembourg

Profilex s.a.

4A, Z.I. In den Allern
L-9911 Troisvierges

Tel: 00352/99 89 06

Fax: 00352/26 95 73 73

www.profilex-systems.com

profilex@pt.lu



Designed for harsh or aggressive environment



Hygienic design for food industry



Stainless steel housing EN1.4404 / AISI 316



Completely sealed, Protection rating IP69K



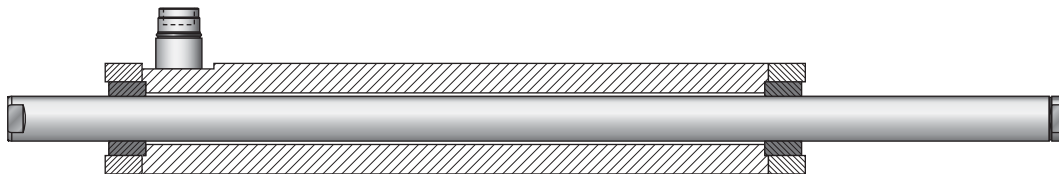
With optional integrated water cooling pipes

The linear motor technology for industrial applications

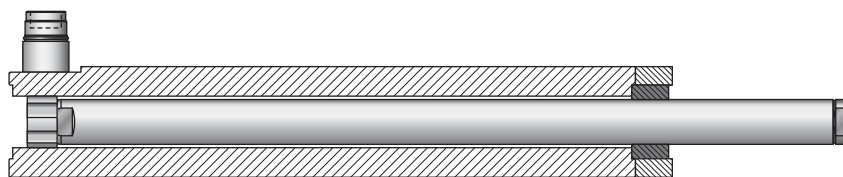
Stainless Steel Stator IP69K with bearings



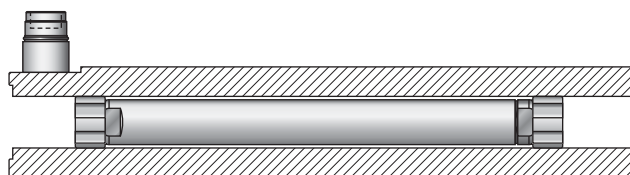
External bearings for mid range Strokes



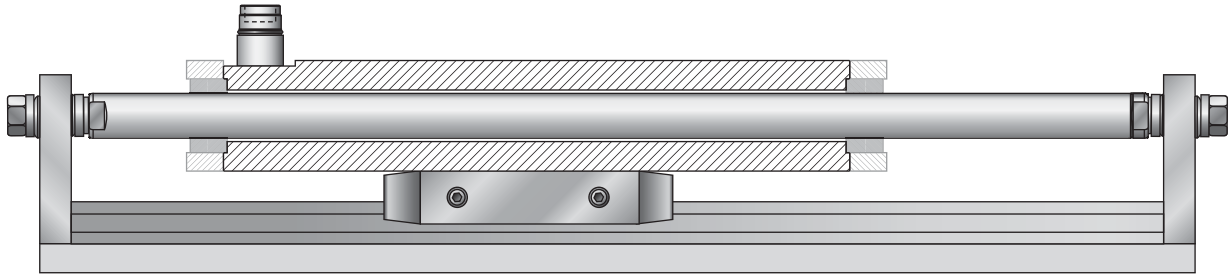
Internal/external bearings for short Strokes



Internal bearings for short Strokes

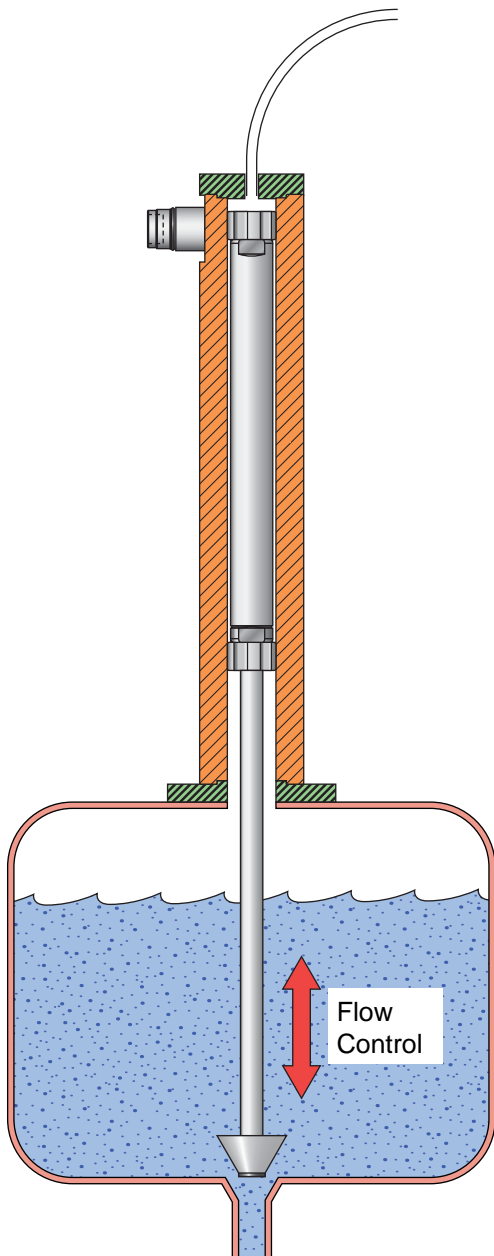


Application Example 1: Linear Stage IP69K



Application Example 2: Flow Control

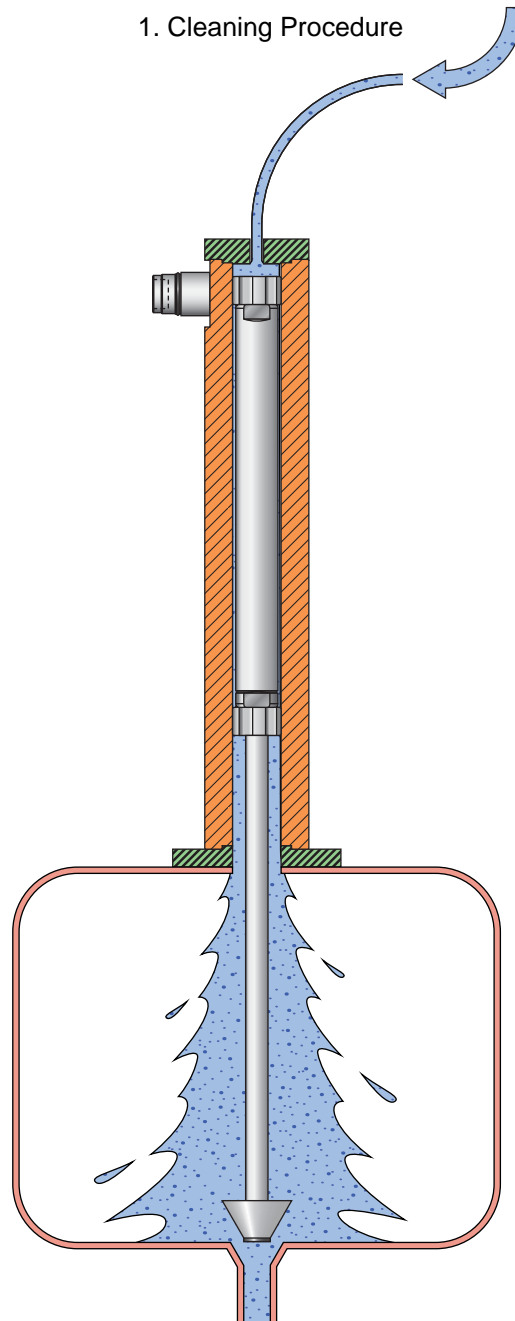
1. Normal Operation



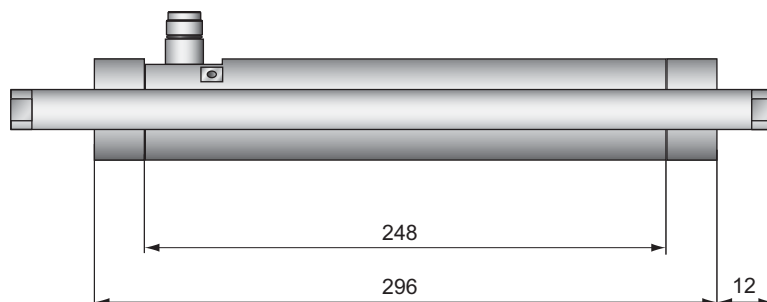
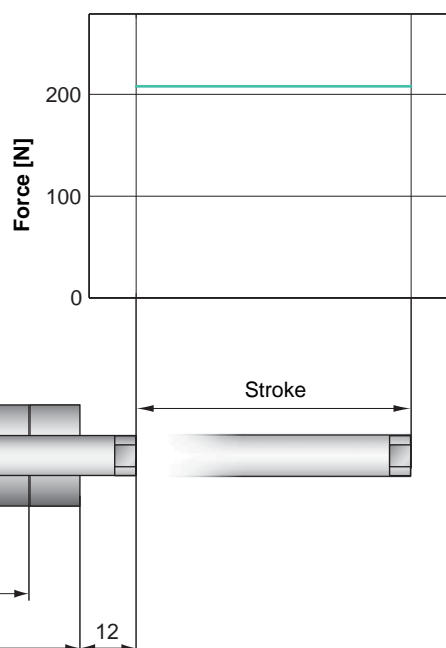
Applications:

- Clean Room
- Vacuum
- Aseptic

1. Cleaning Procedure



Max. Stroke: 680mm
Peak Force: 210N



**Preliminary
Information**

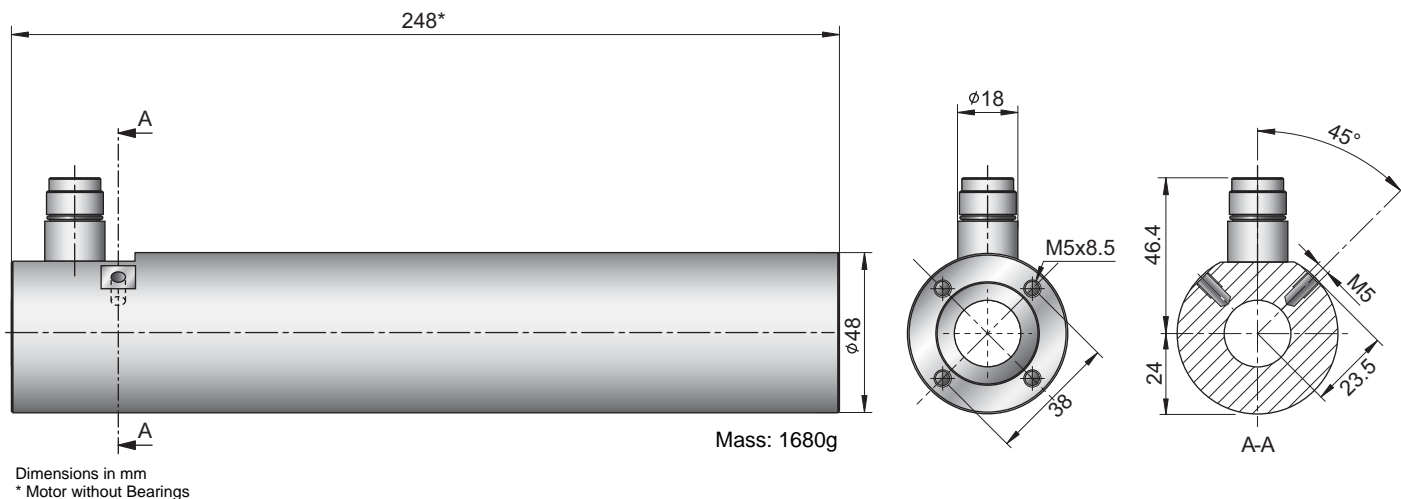
Dimensions in mm

Motor Specifications*

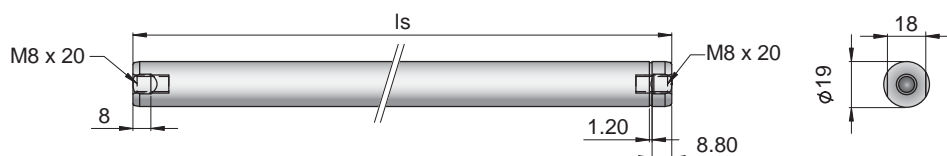
		37x120F-L24-HP-SSC							
Stroke	mm (in)	75 (2.95)	180 (7.09)	280 (11.02)	380 (14.96)	480 (18.90)	580 (22.83)	680 (26.77)	
Peak Force E12x0 - UC	N (lbf)				210 (47.2)				
Peak Force E11x0 - XC	N (lbf)				210 (47.2)				
Cont. Force	N (lbf)				24 (5.4)				
Cont. Force Liquid cooling	N (lbf)				65 (14.6)				
Force Constant	N/A (lbf/A)				14 (3.1)				
Max. Current @ 72VDC	A				15				
Max. Velocity @ 72VDC	m/s (in/s)				- (-)				
Phase Resist. 25/80 °C	Ohm				2.5/3				
Phase Inductance	mH				1.6				
Thermal Resistance	°K/W				-				
Thermal Time Const.	sec				-				
Stator Diameter	mm (in)				48 (1.89)				
Stator Length	mm (in)				296 (11.65)				
Stator Mass	g (lb)				2200 (4.85)				
Slider Diameter	mm (in)				19 (0.75)				
Slider Length	mm (in)	395 (15.55)	500 (19.69)	600 (23.62)	700 (27.56)	800 (31.50)	900 (35.43)	1000 (39.37)	
Slider Mass	g (lb)	746 (1.64)	958 (2.11)	1167 (2.57)	1376 (3.03)	1586 (3.50)	1785 (3.94)	1980 (4.37)	
Position Repeatability	mm (in)				±0.05 (±0.0020)				
Linearity	%				±0.10				
Position Rep. with ES	mm (in)				±0.01 (±0.0004)				
Linearity with ES	mm (in)				±0.01 (±0.0004)				

*for Motors with Bearings, other Values without Bearings (see LinMot Designer)

PS01-37x120F-HP-SSC



PL01-19x.../...



Is [mm]	395	500	600	700
800	900	1000		

Linear Motor		Stator		Slider	
Type	Art. Nr.	Type	Art. No.	Type	Art No.
P01-37x120F/75x75-L24-HP-SSC	-->			& PL01-19x395/320	0150-1452
P01-37x120F/180x180-L24-HP-SSC	-->			& PL01-19x500/420	0150-1455
P01-37x120F/280x280-L24-HP-SSC	-->	PS01-37x120F-HP-SSC-R	0150-1282	& PL01-19x600/520	0150-1456
P01-37x120F/380x380-L24-HP-SSC	-->	PS01-37x120F-HP-SSC-R-FC	0150-1283	& PL01-19x700/620	0150-1457
P01-37x120F/480x480-L24-HP-SSC	-->			& PL01-19x800/720	01-50-1458
P01-37x120F/580x580-L24-HP-SSC	-->			& PL01-19x900/820	0150-1459
P01-37x120F/680x680-L24-HP-SSC	-->			& PL01-19x1000/920	0150-1460

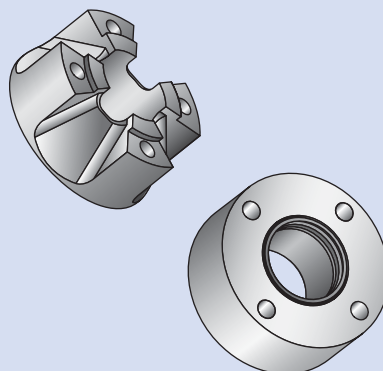
Connectors

Motor Connector Wiring

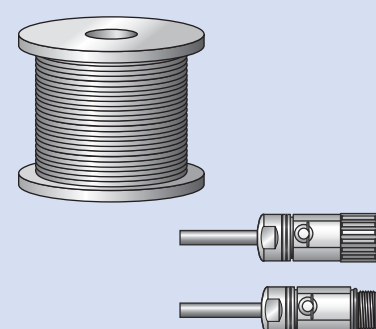
Ph 1+	red	1
Ph 1-	pink	2
Ph 2+	blue	3
Ph 2-	gray	4
+5VDC	white	A
GND	inner Shield	B
Sine	yellow	C
Cosine	green	D
Temp.	black	E
Shield	outer Shield	Case

Accessories

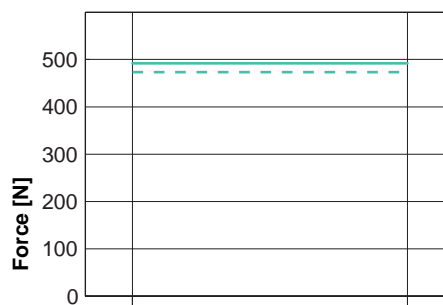
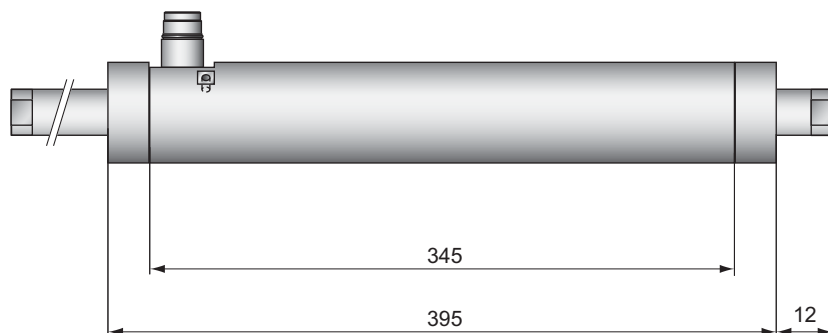
Plain Bearings



Cable + Connectors



Max. Stroke: 1580mm
Peak Force: 496N



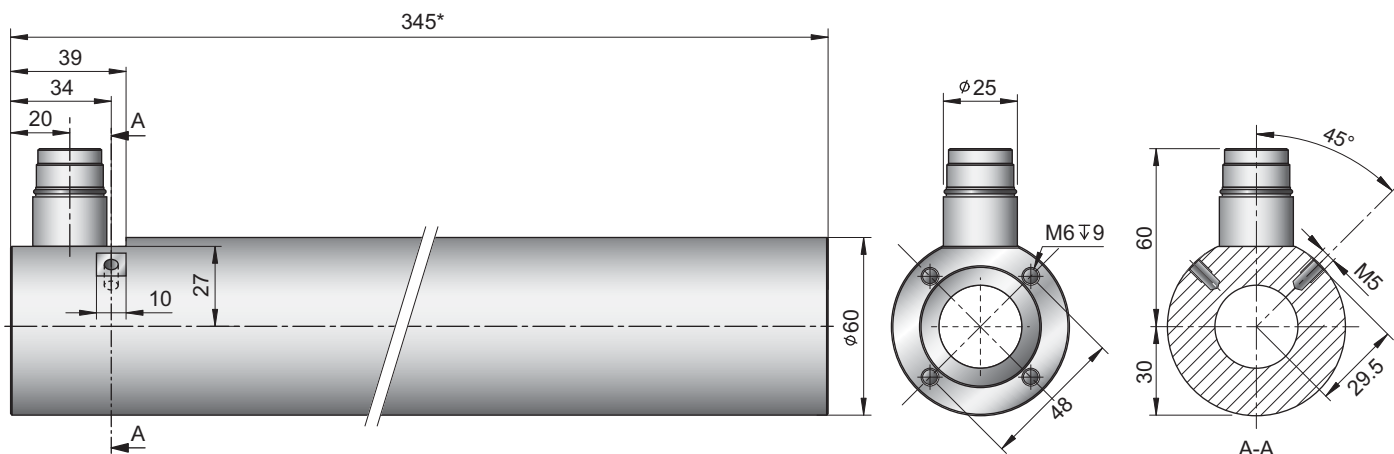
— E1250-UC, 72VDC
 - - - E1100-XC, 72VDC

Dimensions in mm

Motor Specifications*

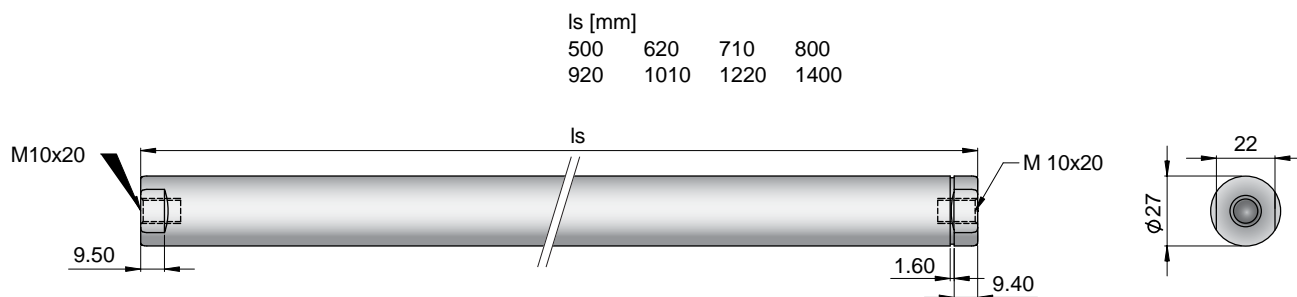
		48x240F-L25-SSC							
Stroke	mm (in)	80 (3.15)	200 (7.87)	290 (11.42)	380 (14.96)	500 (19.69)	590 (23.23)	800 (31.50)	980 (38.58)
Peak Force E12x0 - UC	N (lbf)	496 (111.51)							
Peak Force E11x0 - XC	N (lbf)	477 (107.23)							
Cont. Force	N (lbf)	86 (19.33)							
Cont. Force Liquid cooling	N (lbf)	241 (54.18)							
Force Constant	N/A (lbf/A)	19.1 (4.29)							
Max. Current @ 72VDC	A	26							
Max. Velocity @ 72VDC	m/s (in/s)	3.4 (134)							
Phase Resist. 25/80 °C	Ohm	1.0/1.2							
Phase Inductance	mH	1.0							
Thermal Resistance	°K/W	- (-)							
Thermal Time Const.	sec	- (-)							
Stator Diameter	mm (in)	60 (2.36)							
Stator Length	mm (in)	345 (13.58)							
Stator Mass	g (lb)	3710 (8.18)							
Slider Diameter	mm (in)	27 (0.059)							
Slider Length	mm (in)	500(19.69)	620(24.41)	710(27.95)	800(31.50)	920(36.22)	1010(39.76)	1220(48.03)	1400(55.12)
Slider Mass	g (lb)	2010(4.43)	2530(5.58)	2920(6.44)	3310(7.30)	3830(8.44)	4220(9.30)	5130(11.31)	5910(13.03)
Position Repeatability	mm (in)	±0.05 (±0.0020)							
Linearity	%	±0.10							
Position Rep. with ES	mm (in)	±0.01 (±0.0004)							
Linearity with ES	mm (in)	±0.01 (±0.0004)							

*for Motors with Bearings, other Values without Bearings (see LinMot Designer)



Dimensions in mm
* Motor without Bearings

PL01-27x.../...



Ls [mm]
500 620 710 800
920 1010 1220 1400

Linear Motor		Stator		Slider	
Type	Art. Nr.	Type	Art. No.	Type	Art No.
P01-48x240F/80x80-L25-SSC	-->			& PL01-27x500/420	0150-1469
P01-48x240F/200x200-L25-SSC	-->			& PL01-27x620/540	0150-1470
P01-48x240F/290x290-L25-SSC	-->	PS01-48x240F-SSC-C	0150-1267	& PL01-27x710/630	0150-1471
P01-48x240F/380x380-L25-SSC	-->	PS01-48x240F-SSC-C-FC	0150-1268	& PL01-27x800/720	0150-1472
P01-48x240F/500x500-L25-SSC	-->	PS01-48x240F-SSC-Cw	0150-1274	& PL01-27x920/840	0150-1447
P01-48x240F/590x590-L25-SSC	-->	PS01-48x240F-SSC-Cw-FC	0150-1275	& PL01-27x1010/930	0150-1473
P01-48x240F/800x800-L25-SSC	-->			& PL01-27x1220/1140	0150-1587
P01-48x240F/980x980-L25-SSC	-->			& PL01-27x1400/1320	0150-1588

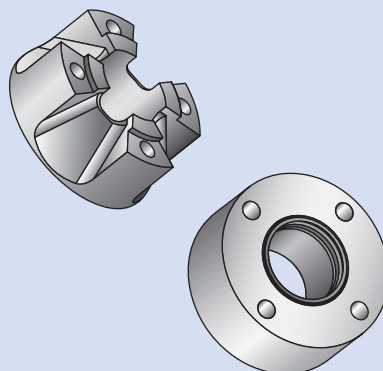
Connectors

Motor Connector Wiring

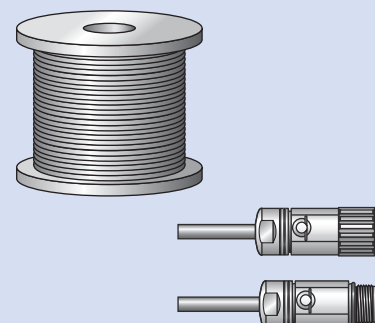
Ph 1+	red	1
Ph 1-	pink	2
Ph 2+	blue	3
Ph 2-	gray	4
+5VDC	white	A
GND	inner Shield	B
Sine	yellow	C
Cosine	green	D
Temp.	black	E
Shield	outer Shield	Case

Accessories

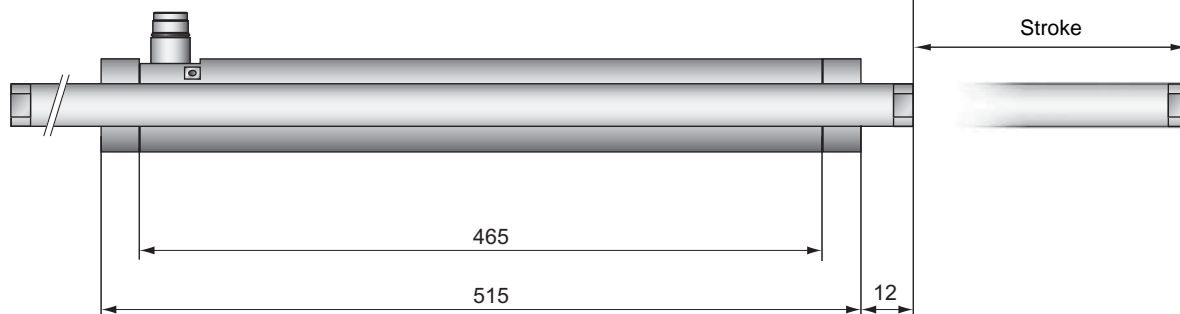
Plain Bearings



Cable + Connectors



Max. Stroke: 1710mm
Peak Force: 888N

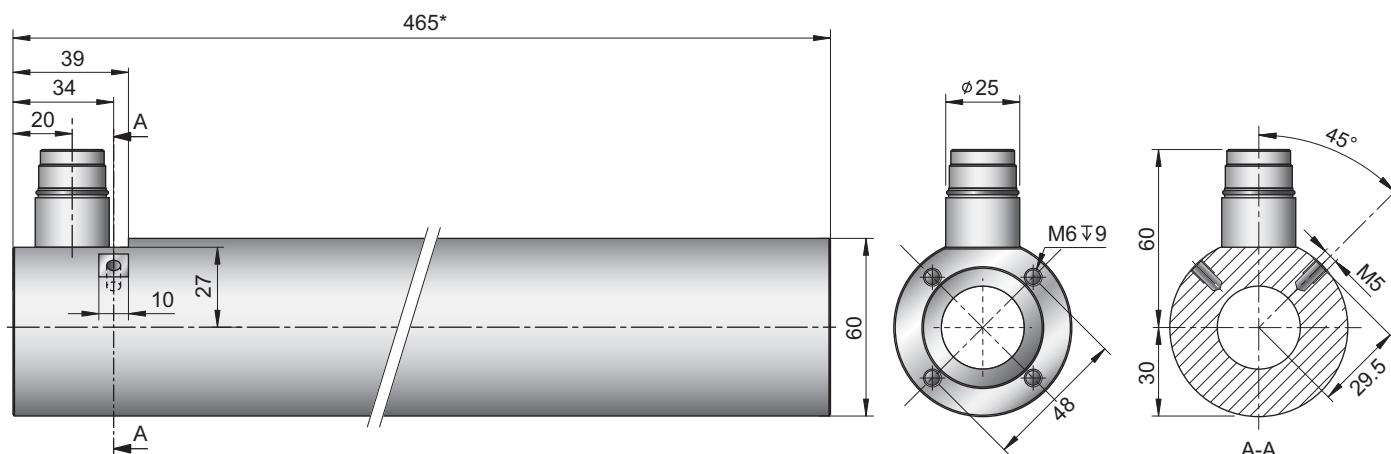


Dimensions in mm

Motor Specification

		48x360F-L25-SSC							
Stroke Max.	mm (in)	80	170	260	380	470	680	860	
Peak Force E12x0 - UC	N (lbf)			888	(199.6)				
Peak Force E11x0 - XC	N (lbf)			693	(155.8)				
Cont. Force	N (lbf)			129	(29.0)				
Cont. Force Liquid cooling	N (lbf)			360	(80.9)				
Force Constant	N/A (lbf/A)			27.7	(6.23)				
Max. Current @ 72VDC	A			32					
Max. Velocity @ 72VDC	m/s (in/s)			2.35					
Phase Resist. 25/80 °C	Ohm			1.5/1.8					
Phase Inductance	mH			1.5					
Thermal Resistance	°K/W			- (-)					
Thermal Time Const.	sec			- (-)					
Stator Diameter	mm (in)			60	(2.36)				
Stator Length	mm (in)			465	(18.31)				
Stator Mass	g (lb)			5000	(11.02)				
Slider Diameter	mm (in)			27	(0.059)				
Slider Length	mm (in)	620(24.41)	710(27.95)	800(31.50)	920(36.22)	1010(39.76)	1220(48.03)	1400(55.12)	
Slider Mass	g (lb)	2530(5.58)	2920(6.44)	3310(7.30)	3830(8.44)	4220(9.30)	5130(11.31)	5910(13.03)	
Position Repeatability	mm (in)			±0.05	(±0.0020)				
Linearity	%			±0.10					
Position Rep. with ES	mm (in)			±0.01	(±0.0004)				
Linearity with ES	mm (in)			±0.01	(±0.0004)				

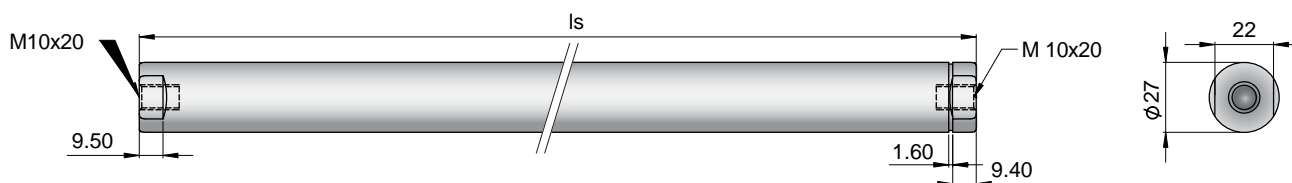
*for Motors with Bearings, other Values without Bearings (see LinMot Designer)



Dimensions in mm
* Motor without Bearings

PL01-27x.../...-HP

Is [mm]
620 710 800 920
1010 1220 1400



Linear Motor		Stator		Slider	
Type	Art. Nr.	Type	Art. No.	Type	Art No.
P01-48x360F/80x80-L25-SSC	-->			& PL01-27x620/540	0150-1470
P01-48x360F/170x170-L25-SSC	-->			& PL01-27x710/630	0150-1471
P01-48x360F/260x260-L25-SSC	-->			& PL01-27x800/720	0150-1472
P01-48x360F/380x380-L25-SSC	-->	PS01-48x360F-SSC-C	0150-1270	& PL01-27x920/840	0150-1447
P01-48x360F/470x470-L25-SSC	-->	PS01-48x360F-SSC-C-FC	0150-1271	& PL01-27x1010/930	0150-1473
P01-48x360F/680x680-L25-SSC	-->			& PL01-27x1220/1140	0150-1587
P01-48x360F/860x860-L25-SSC	-->			& PL01-27x1400/1320	0150-1588

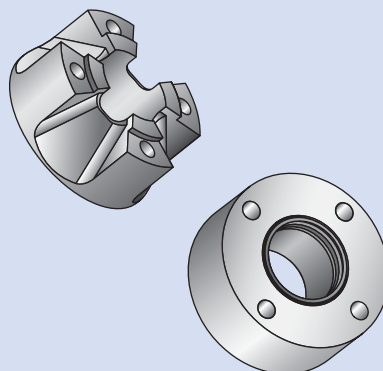
Connectors

Motor Connector Wiring

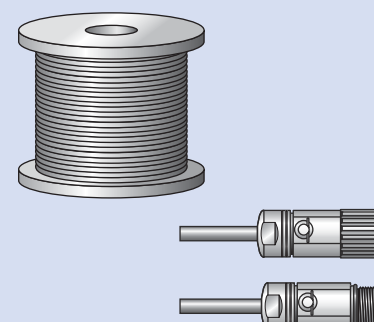
Ph 1+	red	1
Ph 1-	pink	2
Ph 2+	blue	3
Ph 2-	gray	4
+5VDC	white	A
GND	inner Shield	B
Sine	yellow	C
Cosine	green	D
Temp.	black	E
Shield	outer Shield	Case

Accessories

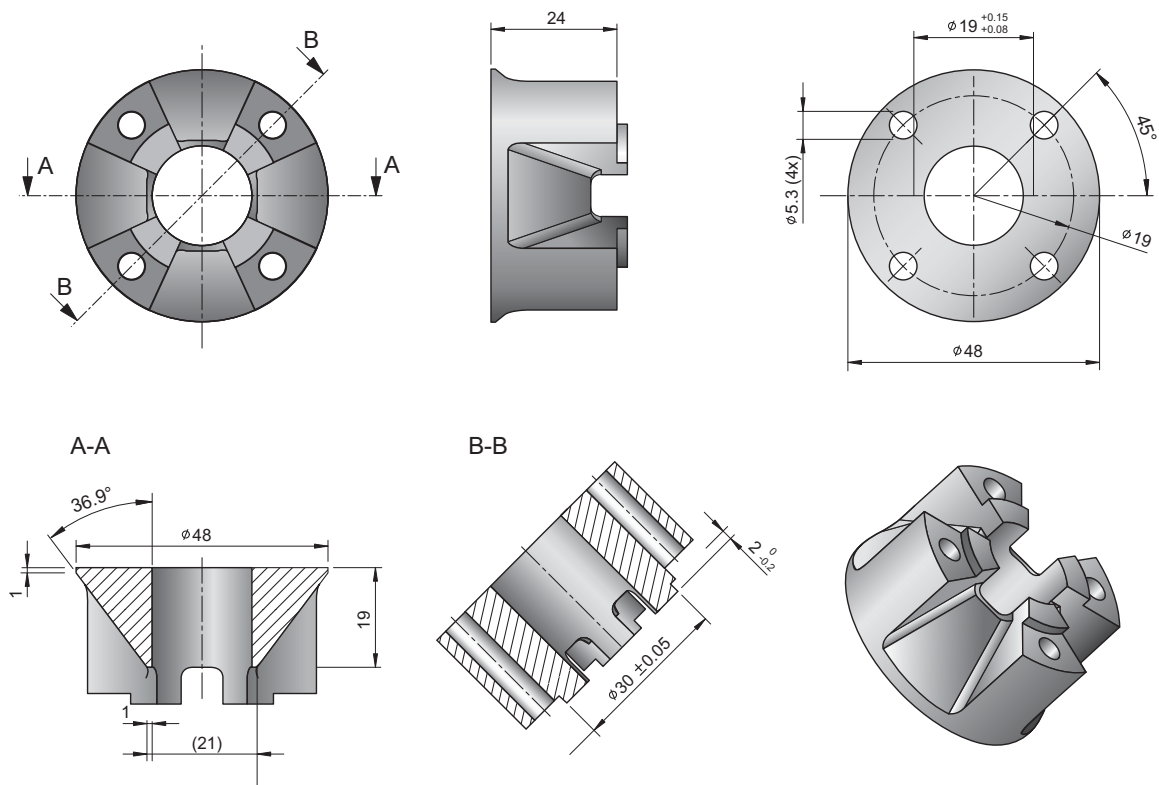
Plain Bearings



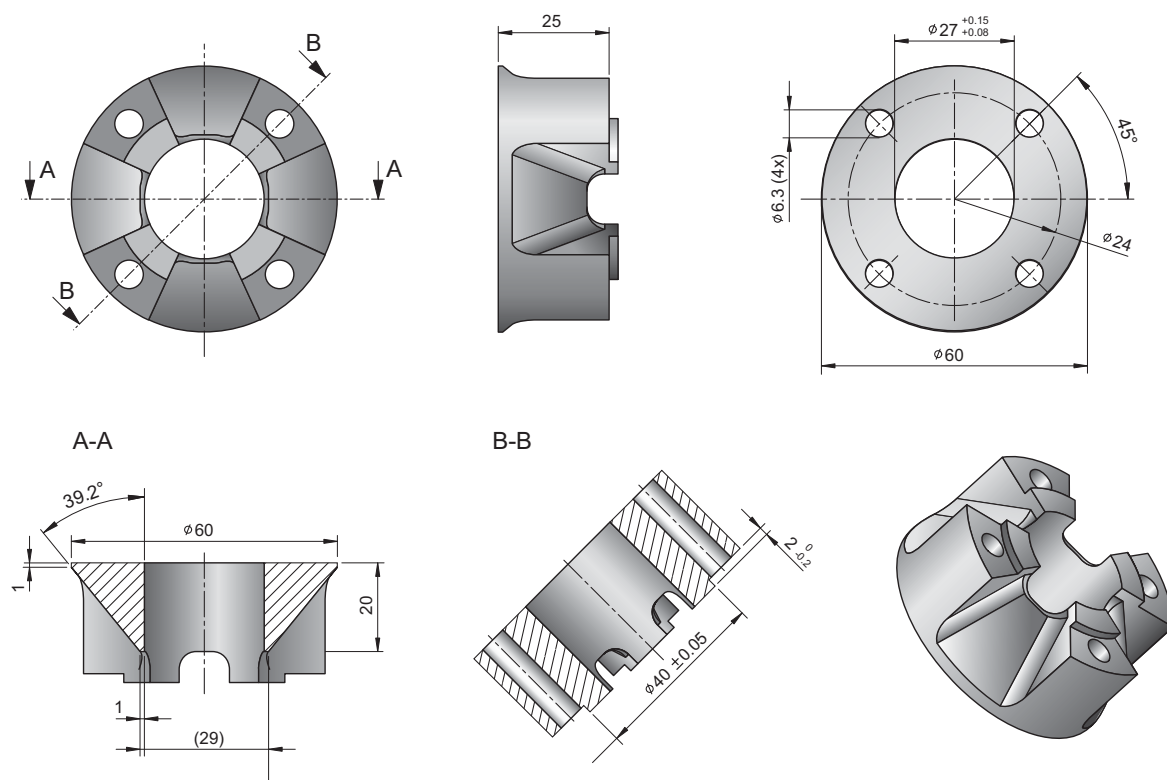
Cable + Connectors



PB02-37x24-P-WD



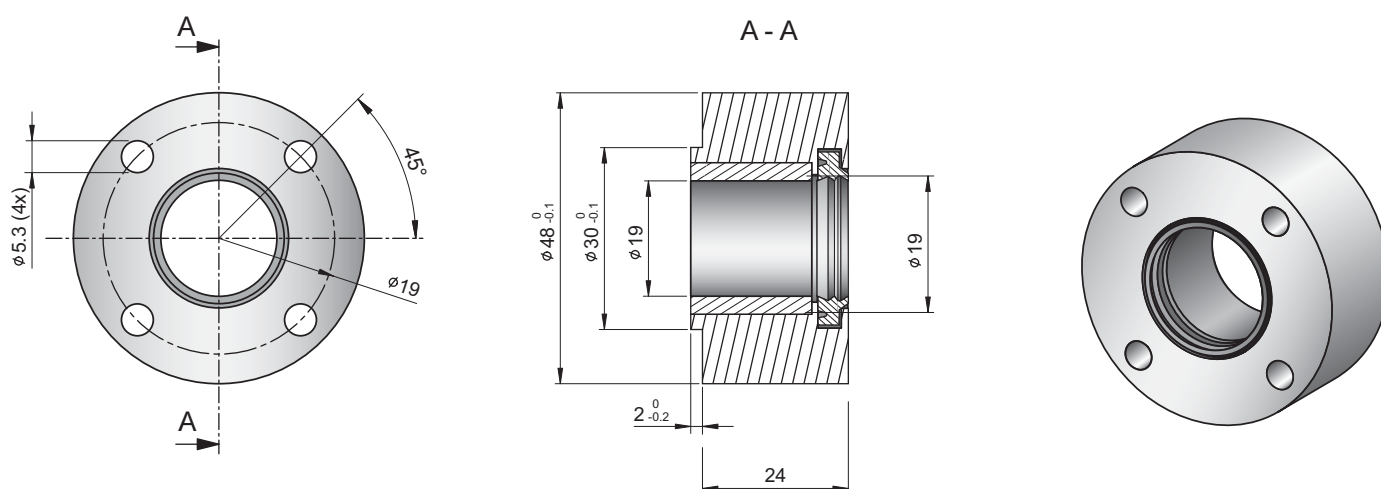
PB02-48x25P-WD



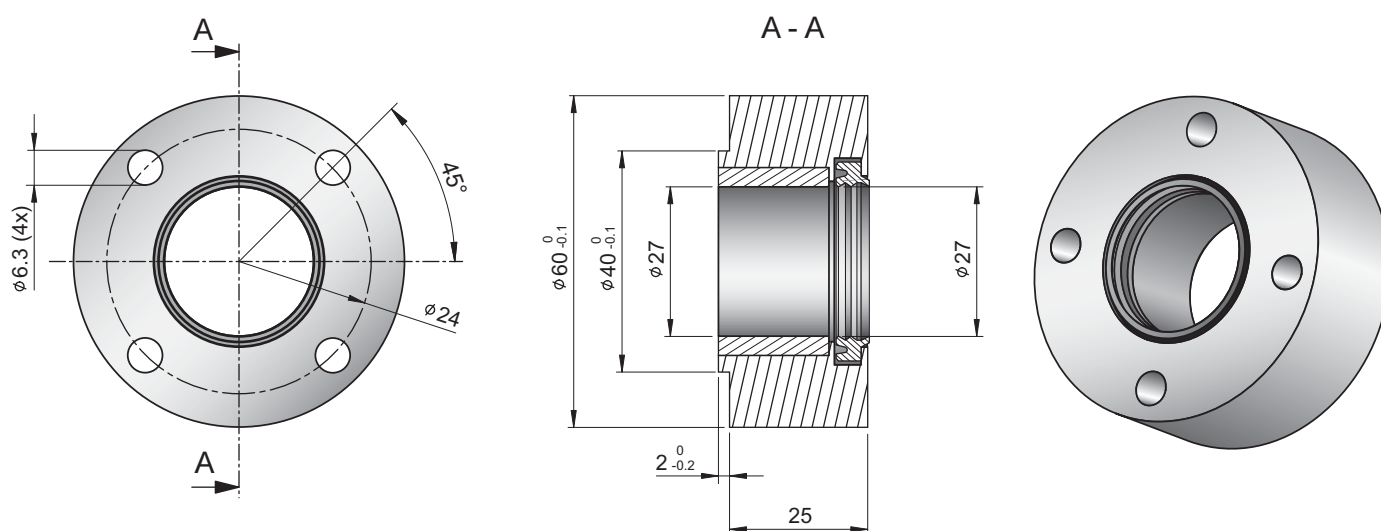
Ordering information

Item	Description	Part Number
PB01-37x24-P-WD	Plain Bearing for PS01-37x...-SSC (synthetical)	0150-3299
PB01-48x25-P-WD	Plain Bearing for PS01-48x...-SSC (synthetical)	0150-3271

PB01-37x24-SS



PB01-48x25-SS



Ordering information

Item	Description	Part Number
PB01-37x24-SS	Plain Bearing for PS01-37x...-SSC (Stainless Steel)	0150-3290
PB01-48x25-SS	Plain Bearing for PS01-48x...-SSC (Stainless Steel)	0150-3281

Smart solutions are driven by

LinMot®

Your local contractor:



LinMot®

All for linear motion from a single source

LinMot Europe

NTI AG
Haerdlistrasse 15
CH - 8957 Spreitenbach
Tel.: +41-(0)56-419 91 91
Fax: +41-(0)56-419 91 92
E-Mail: office@linmot.com
Web: www.linmot.com

LinMot USA

LinMot, Inc.
N5750 Townline Road
Elkhorn, WI 53121
Sales : 877-546-3270
262-743-2555
Tech. Service: 877-804-0718
262-743-1284
Fax: 800-463-8708
262-723-6688
E-Mail: sales@linmot-usa.com
Web: www.linmot-usa.com